

Arizona Society of Enrolled Agents Menu

Friday, June 12, 2009



Lunch
Fajita Buffet

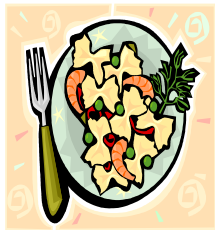
President's Dinner

Green Salad
Choice of:

- Flat Iron Steak
- Salmon
- Stuffed Portabella

All served with rice pilaf,
seasonal vegetables and
carrot cake.

Saturday, June 13, 2009



Lunch

- Green Salad
- Lemon Herb Chicken
- Pasta Primavera
- Season Vegetables
- Assorted Deserts

Please mark your choice for
dinner and lunch .
Persons with physical needs or
special dietary concerns, please
email Roxanne Augenstein
Rox@rwcinc.net

Experience June at 7000 Feet

Grand Canyon Railway provides a historic and fun journey to the canyon with the help of authentic western characters who bring the Old West to life. **Arizona Snowbowl Skyride** shuttles you to an elevation of 11,500 feet for panoramic views atop this extinct volcano. From this elevation, you can see over 70 miles of world-class scenery — including the Grand Canyon and downtown Flagstaff. **The Museum of Northern Arizona** - Therizino Mystery of the Sickle-Claw Dinosaur **Arboretum at Flagstaff** is a botanical garden, research station and environmental education center. **Lowell Observatory**—Celebrate the International Year of Astronomy at Lowell! In celebration of the 400th Anniversary of Galileo's first pointing a telescope at the heavens. **Meteor Crater**—The first proven, best preserved meteorite crater on earth. **Sedona Jeep Tours**—Sedona offers breathtaking beauty that fills the senses and feeds the soul. **Harkins Theater**—Current movies.

Attendance at all sessions will qualify a seminar participant for up to 19 hours of CPE credit for Enrolled Agents. Two of the hours relate to Ethics Training. Other professional groups should consult with their respective licensing agencies regarding possible qualifying credit.

AzSEA has entered into an agreement with the Office of Professional Responsibility (OPR), IRS to meet the requirements of 31 CFR sec. 10.6(g), covering maintenance of attendance records, retention of program outlines, qualifications of instructors and length of class hours. This agreement does not constitute an endorsement by the OPR as to quality of the program or its contribution to the professional competence of the enrolled agents. AzSEA's Sponsor Number is 353.

AZSEA
c/o Roxanne Augenstein
P.O. Box 60457
Flagstaff, AZ 86003.

SouthWest Fest 2009 Representation at it's Peak



June 11-13, 2009
Flagstaff, AZ

Presented by the
Arizona Society
Of Enrolled Agents

Radisson Woodlands Hotel

1175 W. Route 66
Flagstaff, AZ 86001



Leave the heat behind and Join us at Arizona's Peak— Flagstaff. Join us at South West Fest 2009, June 11—13th



WWW.AZTAXPROS.ORG

Registration Fees
Up to 19 hours CPE

	NAEA Members	Non-Members
By May 11	\$260	\$300
After May 11	\$300	\$340



The Radisson Woodlands Hotel Flagstaff is located right off 'old route 66', near historic downtown Flagstaff. There is an air of distinction here: a setting of comfort and elegance unlike any hotel in Flagstaff, Arizona.

Room Reservations
AZSEA special \$124.00 Per night
Until May 12th
Rates are good for stays June 8th—15th
www.Flagstaffwoodlandshotel.com
www.southwestfest.com

Radisson Woodland Hotel
1175 W. Route 66
Flagstaff, AZ 86001
888-207-1718

Agenda

Thursday, June 11th

4:00 PM

Registration Begins

7:00 PM

Panel Discussion 2 CPE

Tax Consequences for Estate Planning
and Bankruptcy

Bring all your questions regarding Estate
Planning and Bankruptcy

Friday, June 12th

7:00 AM

Continental Breakfast

7:30 AM

Annual Meeting

8:00 AM

Engagement Letters

LG Brooks 2 CPE

10:00 AM

Statute of Limitations

LG Brooks 2 CPE

12:00 Lunch

Keynote Speaker

Installation of Officers & Directors

1:00 PM

Foreclosures

LG Brooks 2 CPE

3:00 PM

Hobby Loss Rules

LG Brooks 2 CPE

5:00 PM

Special Session

Let's Talk Taxes 1CPE

6:30 PM

No Host Cocktails

7:00 PM

President's Dinner

Saturday, June 13th

8:00 AM

Ethics

Beanna Whitlock, EA CSA 2 CPE

10:00 AM

The Ugly 1040 II, part I

Beanna Whitlock, EA CSA 2 CPE

11:40

Lunch/Fundraiser Auction

1:00 PM

The Ugly 1040 II, part II

Beanna Whitlock, EA CSA 2 CPE

3:00 PM

The Ugly 1040 II, part III

Beanna Whitlock, EA CSA 2 CPE

Speakers

Keynote Speaker— Jack Wood, EA
NAEA Director

Friday Speaker—L.G. Brooks, EA

L. G. Brooks, is an Enrolled Agent and the Senior Consultant of The Tax Practice, Inc. located in Dallas Texas. L.G. has been in the field of taxation for more than 25 years and his areas of practice include Tax Representation, Tax Consulting, Tax Preparation and Pre-Tax Court Litigation Support Services. L.G. continues to provide tax presentations for numerous tax & accounting societies and has made presentations at several IRS Annual Tax Forums.

Saturday Speaker Beanna J. Whitlock, EA, CSA

Beanna J. Whitlock is an Enrolled Agent in private tax and financial services practice in San Antonio Texas, as well as the Executive Director of the National Society Of Tax Professionals. Beanna is an author and instructor specializing in Partnership and Limited Liability Company issues with a focus on IRS Taxpayer Representation and Ethics and Professional Conduct. Honored by Accounting Today as one of the 100 Most Influential in Accounting from 1997 – 2003, she is a Financial Advisor holding a Series 6 and 63 as well as an insurance license, managing over 14 million in investments for clients.

Tax Panel

Pernell McGuire,- Bankruptcy Law
Law office of Pernell W. McGuire, PLLC

Mike Gordon—Bankruptcy Law
Law office of Gordon & Gordon, PLLC

Kathryn Munro—Estate Planning
Law office of Mangum, Wall, Stoops & Warden, PLLC

Eliza Daley-Read—Estate Planning
Law office of Eliza Daley-Read, PLLC



Chuck Henderson
Memorial Golf Tournament
For info contact
Roxanne Augenstein, EA
Rox@rwcinc.net

Registration

www.aztaxpros.org/swf2009

Or mail to:
AZSEA Southwest Fest
c/o Roxanne Augenstein
P.O. Box 30457
Flagstaff, AZ 86003

Name _____

NAEA# _____

Phone _____

Address _____

City/St/Zip _____

Email _____

NAEA Member \$260 by May 11th
\$300 after May 11th

Non-Member \$300 by May 11th
\$340 after May 11th

Single Day Friday \$200

Single Day Saturday \$175

Single Day must Register by mail.

_____ Extra Lunch @ \$35.00

_____ Extra President's Dinner @ \$50.00

Card# Visa MC AMEX Discover

Expires _____

Name on Card _____

Signature _____

Signature _____

Signature _____

Check Enclosed Payable to AzSEA